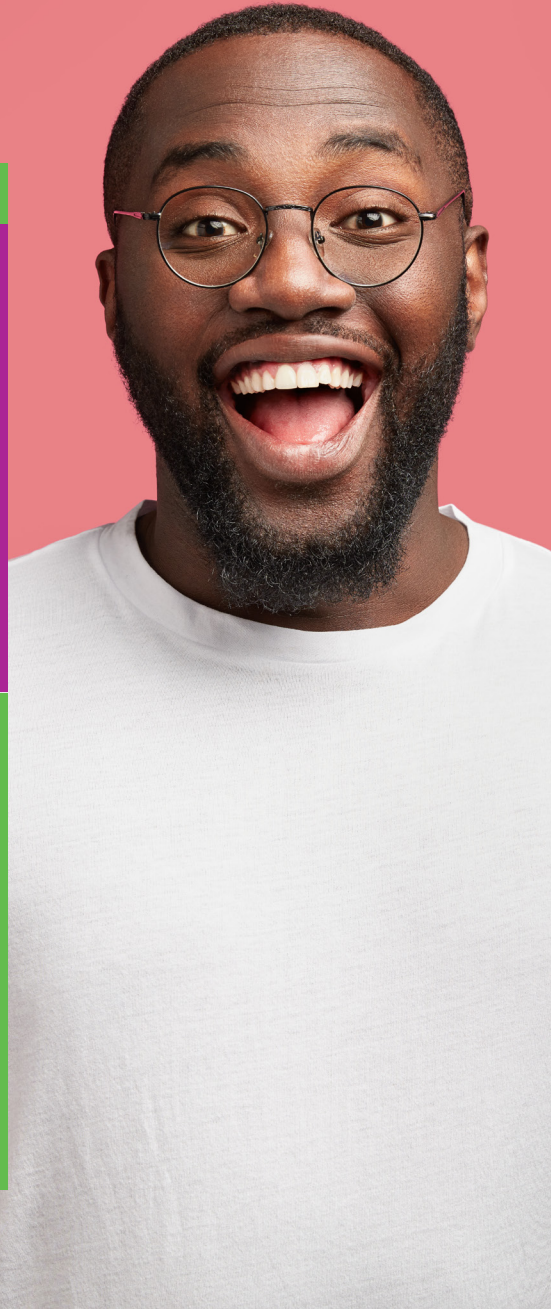


Care Plans

**Spread the cost
of your dental
care** with our
cost-effective
plans

- ✓ **A cost-effective** way to pay for your routine care
- ✓ **Includes all your routine** dental treatment
- ✓ **Global Dental A & E** Assistance Scheme
- ✓ **Regular attendance reduces the risk of oral disease** and the need for invasive treatments
- ✓ **Convenient payment** by monthly Direct Debit



www.sixtysixdental.co.uk
01730 263092

66 Station Road, Petersfield, Hampshire, GU32 3ET



Our Dental Plans

from **£21.47** per month
depending on your current dental
health and future dental needs

- ✓ **Regular dental examinations**
- ✓ **Regular hygiene visits**

- ✓ **X-rays included** (as clinically required)
- ✓ **All necessary fillings**
- ✓ **Extractions**
- ✓ **Root canal treatment**
- ✓ **Crowns, bridges and dentures**
(excluding lab bills)
- ✓ **Global Dental A&E Assistance Scheme**

Becoming a member is quick and simple

You can set up your monthly Direct Debit payment at reception or by getting in touch with the practice. Please note, a £8 registration fee will also be collected with your first month's collection.

Global Dental A & E Assistance Scheme

Our dental plans include access to a Global Dental Accident and Emergency Assistance Scheme. The Scheme is established to offer support to patients who request assistance or treatment following an accident, a dental emergency or are diagnosed with mouth cancer.

Whilst the scheme aims to provide benefits in most cases, the scheme is a wholly discretionary scheme, not an insurance scheme. It has no obligation to provide benefits and the Scheme Manager will look at each request individually to decide whether or not to provide benefits.

Further details are available from the practice or you can visit www.globaldentalscheme.co.uk to find out more.

www.sixtysixdental.co.uk

01730 263092

66 Station Road, Petersfield, Hampshire, GU32 3ET

